



EDUCATIONAL COMMISSION FOR
FOREIGN MEDICAL GRADUATES



ECFMG | FAIMER Update

Tracy Wallowicz, MLS
Assistant Vice President, U.S. Graduate Medical Education Services

Today's Discussion

- IMG Performance in 2021 Match
- Pathways for 2021 Match
- IMGs Entering Residency in 2021
- J-1 Visa Sponsorship
- Pathways for 2022 Match



IMG Performance in 2021 Match

2021 ERAS Season

ERAS® 2021 Residency Tokens

- 21,724 residency tokens issued to IMGs
- Increase of 12.2% over 2020

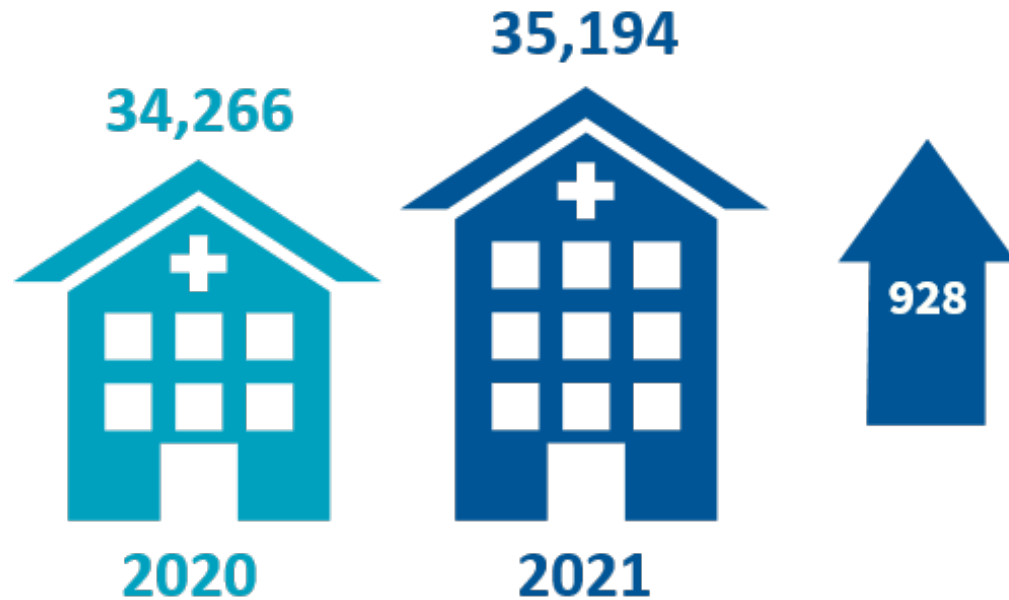
IMG Applicants to Residency Programs

- An approximate 12% increase in IMG applications for ERAS 2021 compared the same time in ERAS 2020 to date ($\approx 19,000$)*
- Previously, the number of ERAS applications was decreasing each season by 2-3% every year since ERAS 2018

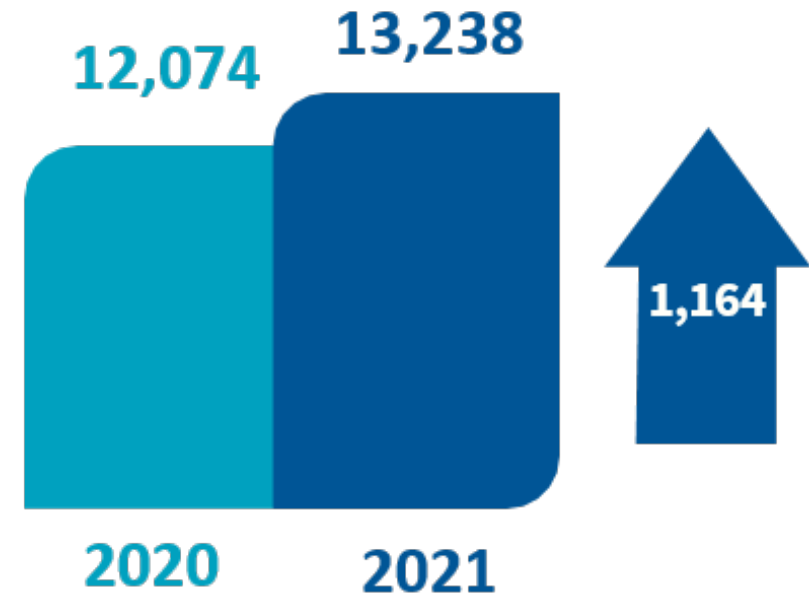
**As of January 31, 2021*

Match Positions and IMG Participation

First-year Residency Positions Offered



IMG Participation



Source: National Resident Matching Program® 2021 Main Residency Match® Advance Data Tables.

IMG Match Rates

2020 Match



7,376
(61.1%)
IMGs Matched

2021 Match



7,508
(56.7%)
IMGs Matched



Source: National Resident Matching Program® 2021 Main Residency Match® Advance Data Tables.

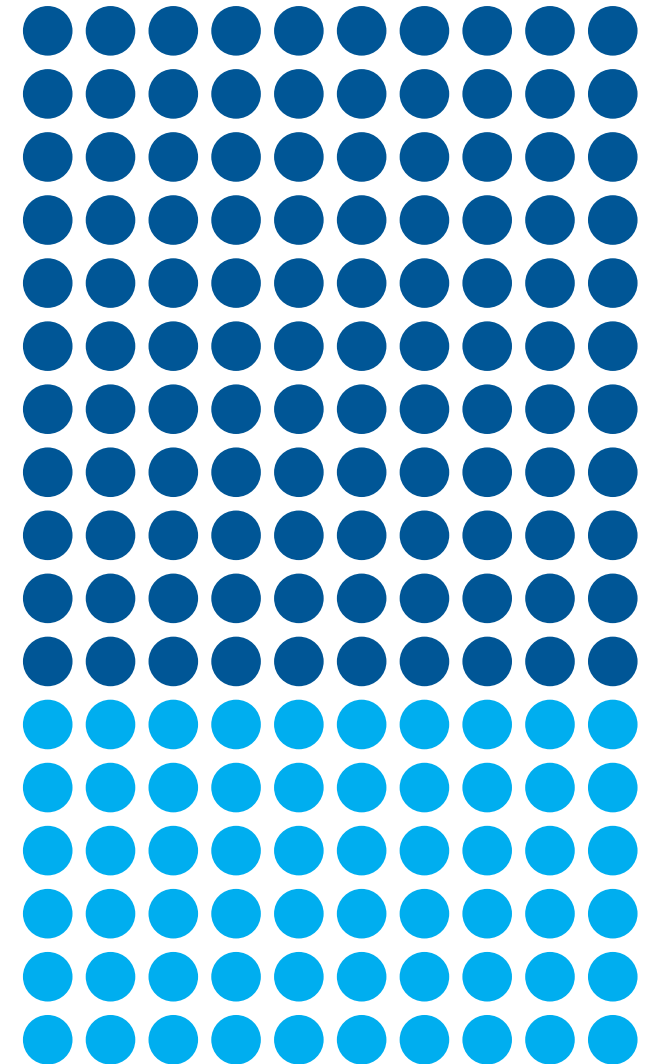
Pathways for 2021 Match

NRMP Eligibility Status

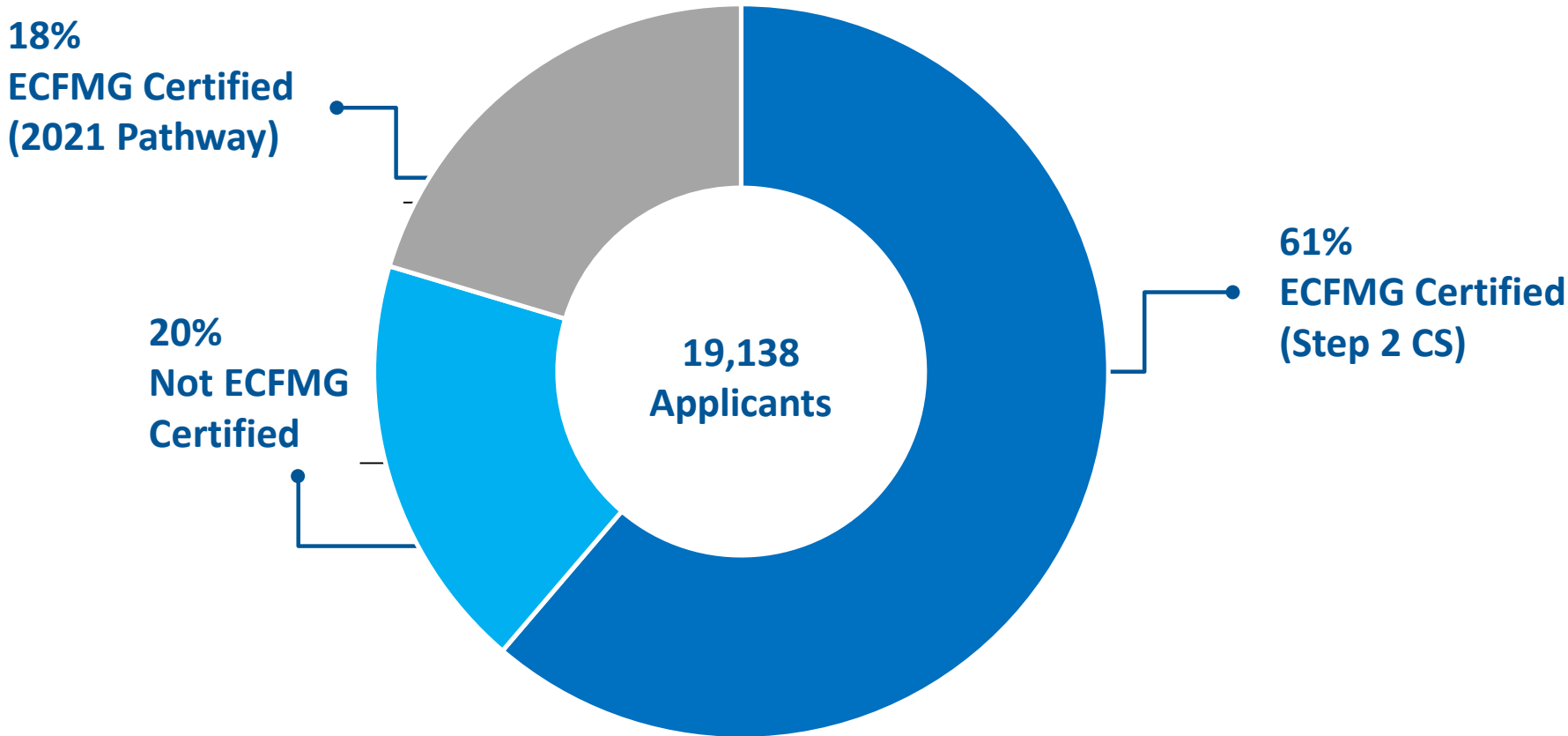
- More than 17,000 IMGs met ECFMG requirements and were verified to NRMP as “eligible” for the 2021 Match.
- Approximately 6,000 IMGs who registered for the 2021 Match completed a pathway

1/3 of IMGs
in the 2021 Match
completed a pathway

● =100 IMGs



Certification Status of IMG ERAS Applicants



IMGs Entering Residency in 2021

IMGs Entering Residency in 2021

Specific Concerns / Issues

- International medical students, like U.S. medical students, have not had traditional clinical experiences
- Issues different for U.S.-citizen IMGs and foreign national IMGs
- Continued travel restrictions due to COVID-19
- Visa implications of early start
- Vaccinations

Continued Mitigation Efforts

- Advocacy with various branches of U.S. government: Department of State, Department of Homeland Security, Social Security Administration
- Ongoing communication and dialogue with DIOs, program directors, and incoming J-1 physicians
- Collaboration with partners

Transition Well-being Themes

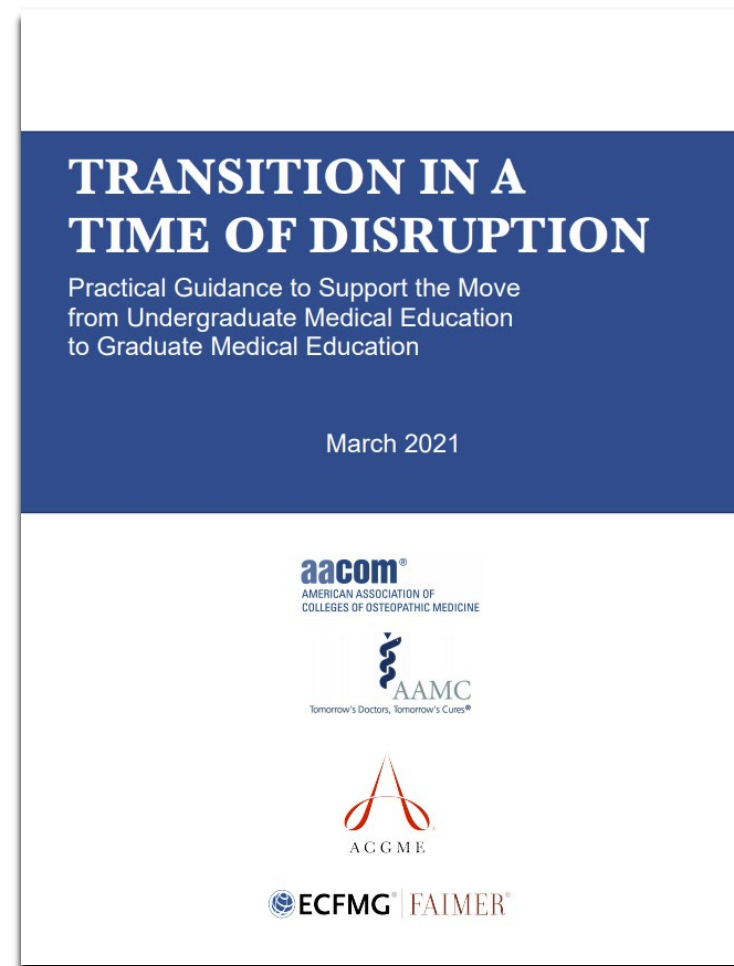
The annual J-1 physician well-being survey administered in October 2020 provided the following insights:

Wellness Challenges as a Result of COVID-19:

- Excessive loneliness / no time to adjust to new environment
- Not enough guidance from leadership
- Lack of PPE
- Lack of connectedness / inability to travel
- U.S. grad safety and wellness prioritized
- Afraid to ask for help due to “fragile” immigration status

Supporting UME to GME Transition

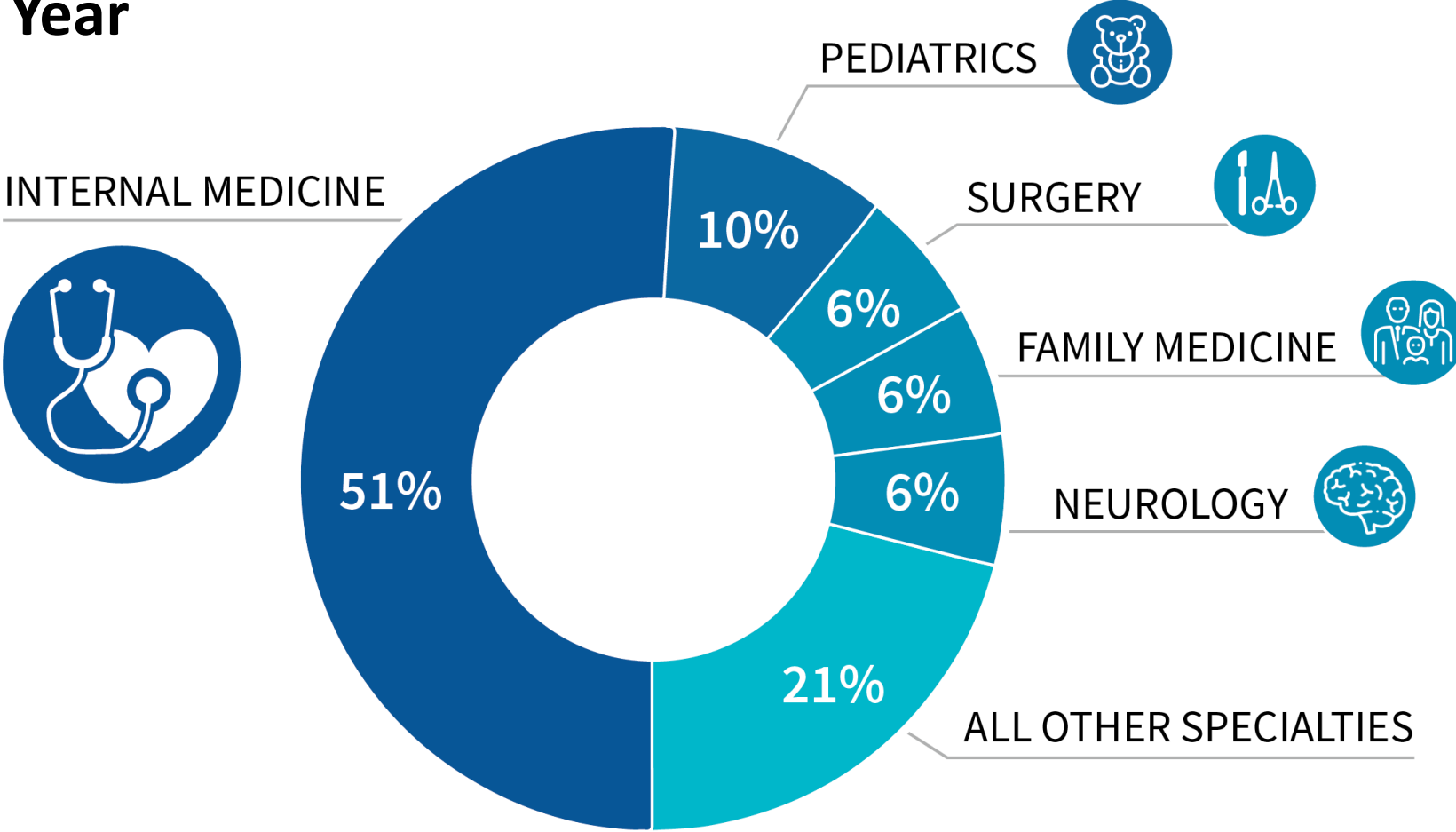
- Collaboration to develop a new toolkit of resources to support medical school graduates and U.S. GME programs in the transition to the first year of GME during the COVID-19 pandemic
- Available now on ECFMG website
- Enhancements forthcoming



J-1 Visa Sponsorship

Specialties* Pursued by J-1 Physicians

2020 Calendar Year



*Specialties listed include related subspecialties.

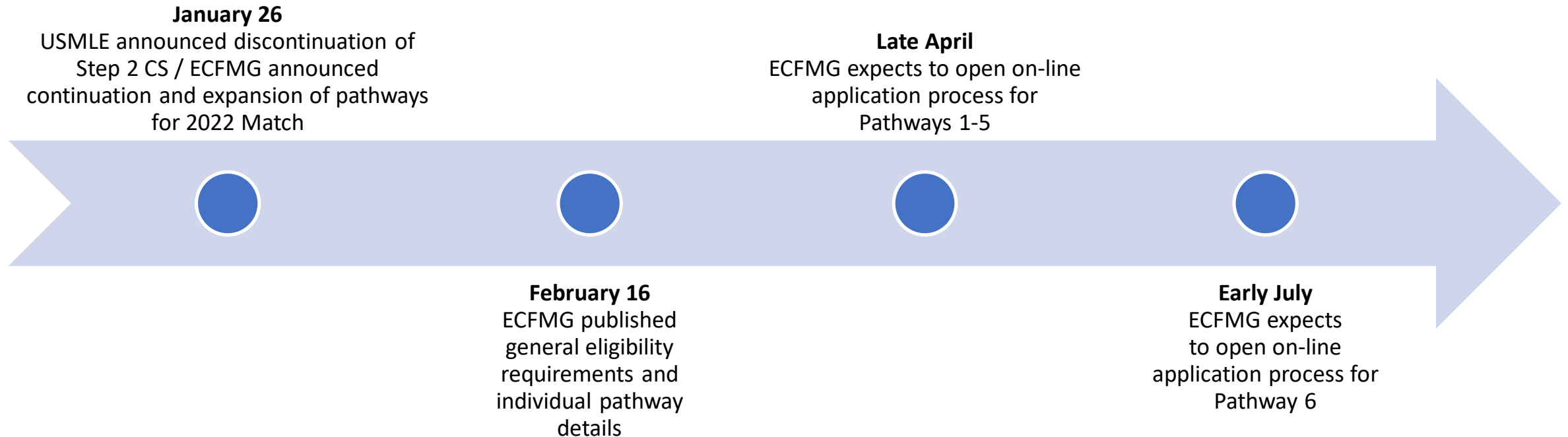
Supporting Incoming J-1 Physicians

ECFMG | FAIMER is working to promote a smooth transition for incoming J-1 physicians in advance of July 1, including:

- Exchange Visitor Sponsorship Program (EVSP) is working at full capacity, so far slight increase in total application volume
- Advocating with the U.S. Department of State to reduce entry barriers
- Surveying DIOs, Program Directors, and Training Program Liaisons to identify and respond to common challenges
- Outreach to incoming J-1 physicians to provide timely information and supportive resources

Pathways for 2022 Match

Step 2 CS Discontinuation and 2022 Pathways Timeline



Questions & Discussion



twallowicz@ecfm.org

www.ecfm.org |   